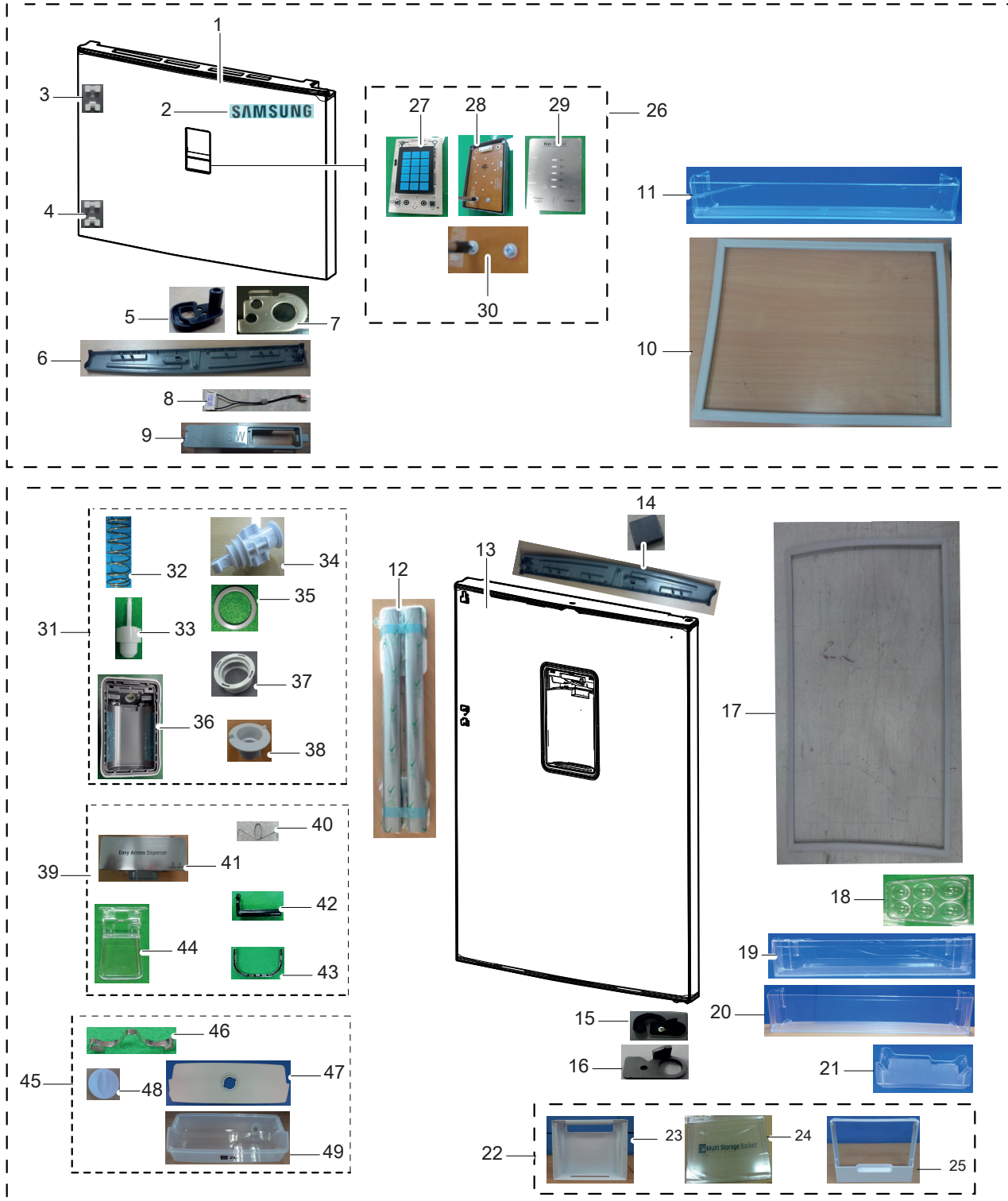


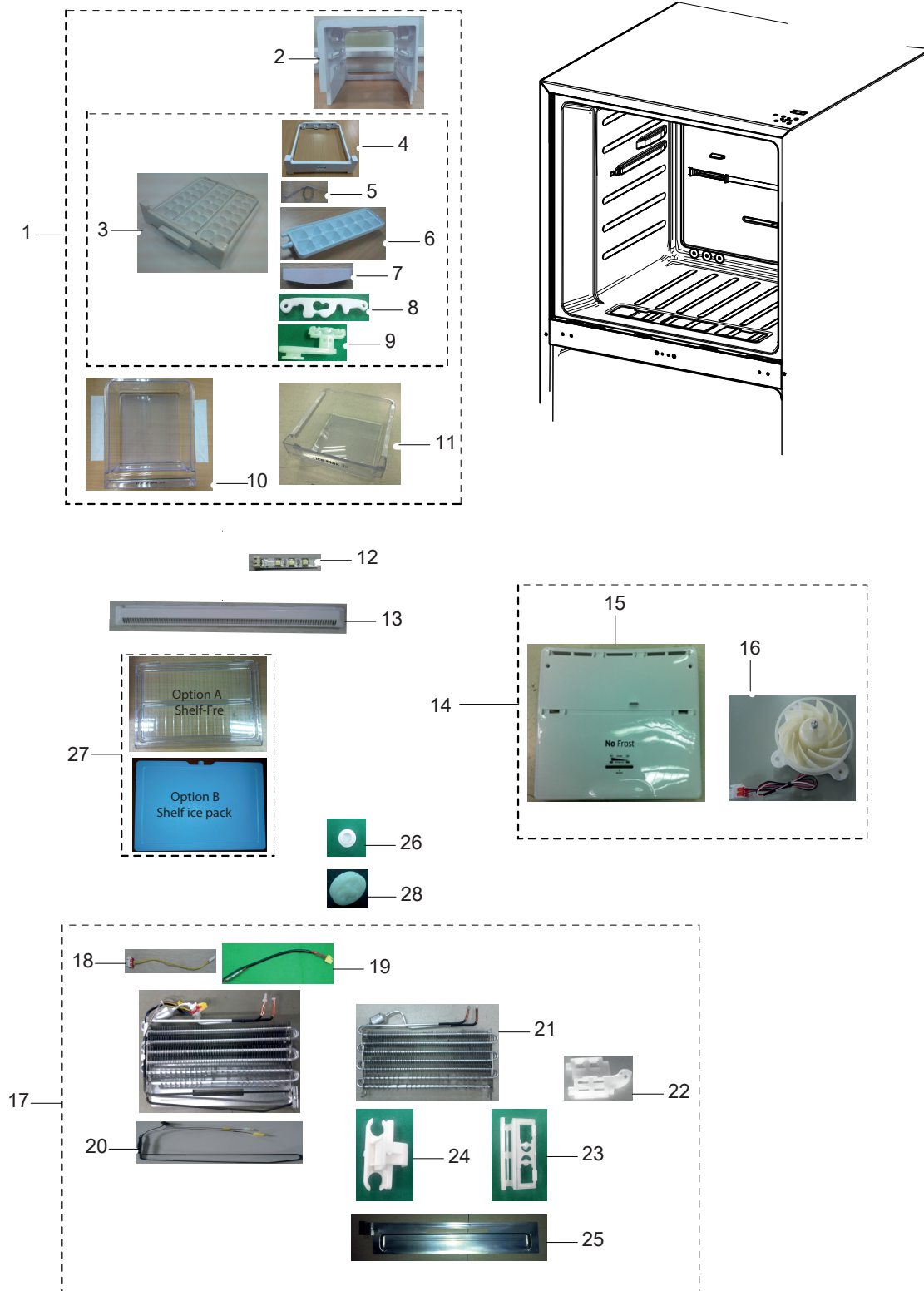
**Door compartment**



**PART LIST OF DOOR : RT50H6600SL/EF**

No.	Code No.	Lvl.	Loc.	Description	Specification	Qty	SA/SNA
1	DA91-04143B	2	M0063	ASSY DOOR FOAM-FRE	RT-H500G,SL (EZ Clean	1	SA
2	DA64-04020A	3	M0196	MASCOT	ALL,NI,-,TO.06,L80	1	SA
3	DA61-08699A	4	-	FIXER-HANDLE A	MT12,PP+GLASS,NTR,RIVET	1	SNA
4	DA61-08700A	4	-	FIXER-HANDLE B	MT12,PP+GLASS,NTR,RIVET	1	SNA
5	DA63-06734B	4	-	GROMMET HINGE-FRE LOW	RT-H530G,POM,BLACK	1	SA
6	DA67-03794A	4	A0070	CAP DOOR-FRE LOW	RT-H530G,ABS,HB,HG-0760	1	SNA
7	DA71-40137A	4	A0597	STOPPER-DOOR	STS304,-,T2.0	1	SA
8	DA34-00043J	2	-	SWITCH REED	UL1007 AWG 22,50mm,DEM1-B503	1	SA
9	DA67-02385M	2	-	CAP SWITCH-REED	3050-PJT,PP,HB,BJ750,INO	1	SA
10	DA97-13921H	2	-	ASSY GASKET-FRE	RT53/RT50,GRAY,W728,L502	1	SA
11	DA63-07697A	2	A0711	GUARD-FRE	RT53/RT50,GPPS,TP BLUE	2	SA
12	DA97-14425A	3	A0553	ASSY-HANDLE	RT53/50/46/43,ALF,INOX-GRAY,	2	SA
13	DA91-04139B	2	Z1100	ASSY DOOR FOAM-REF	RT-H500G,SL (EZ Clean	1	SA
14	DA61-03769B	4	A0534	MAGNET	SVETA,MAGNET,T5,W15,L18	1	SA
15	DA61-00589B	4	-	STOPPER DOOR-REF LOW	TT-PJT,NO-DIS,POM,W	1	SA
16	DA61-09633A	4	-	STOPPER-REF	3050-2,PO-SPHC,T4.0,-	1	SA
17	DA97-13921K	2	-	ASSY GASKET-REF	RT50,GRAY,W730,L1092	1	SA
18	DA63-07346A	2	A0656	TRAY EGG	3050,GPPS,-,HB,TP BLUE,165N,HI-	2	SA
19	DA63-07704A	2	-	GUARD-REF RIGHT	RT53/RT50,GPPS,TP BLUE,D	2	SA
20	DA63-07701A	2	A0713	GUARD-JUMBO	RT53/RT50,GPPS,TP BLUE	1	SA
21	DA63-07703A	2	G0283	GUARD-DISPENSER	RT53/RT50,GPPS,TP BLUE,D	1	SA
26	DA97-13300T	2	A0626	ASSY COVER CONTROL	RT53/50/46/43,UV Inox	1	SA
27	DA92-00464E	3	-	ASSY MODULE	LED DISPLAY MODULE,RT-H530G,	1	SA
28	DA63-07296A	3	A1196	COVER-CONTROL	3050,ABS,HB,INOX GRAY,HG-0	1	SA
29	DA64-04377K	3	-	INLAY-CONTROL	RT53/50/46/43,PC,NATURAL,T	1	SA
30	6002-000470	2	G0412	SCREW-TAPPING	TH,+ ,NO,1,M4,L10,ZPC(WHT),	3	SNA
31	DA97-11229A	3	M0353	ASSY-COCK DISPENSER	TWIN, MT, TD09, NW2-	1	SA
32	DA61-03991A	4	M0217	SPRING ETC-DISPENSER	MT-PJT,STS304,-,-,-	1	SNA
33	DA61-08930A	4	-	GUIDE-PIN	MT12,ABS,WHITE	1	SNA
34	DA61-09941A	4	-	GUIDE-MIDDLE	ABS,HB,HG-0760GP,COOL WHITE	1	SNA
35	DA63-04067A	4	-	GASKET-WATER TANK	MT-PJT,SI,3,DARK GRAY	1	SNA
36	DA97-14551A	3	-	ASSY CASE DISPENSER	RT-H530G,INOX METAL,	1	SNA
37	DA62-03465A	4	M0382	VALVE	TD,SILICON,DARK GRAY	1	SA
38	DA67-03565A	2	-	CAP-COCK	MT12,PP,T1.0,W60,L60,27.7,BJ730	1	SA
39	DA97-14562A	2	-	ASSY COVER DISPENSER	RT-H530G,HOT STAMPI	1	SA
40	DA61-05708B	3	M0022	SPRING ETC-LEVER	NW2-FDR,STS304WPB,D8.1,	1	SNA
41	DA63-07719A	3	M0027	COVER DISPENSER	RT53/50/46/43,ABS,HB,INO	1	SNA
42	DA64-02391B	3	M0034	KEY-LEVER	MT12,POM,40.5*15.3,7,3,BLACK	1	SNA
43	DA64-04322A	3	-	TRIM-DISPENSER	MT12,ABS,MP-0140,W41.9,L6	1	SNA
44	DA66-00986A	3	M0412	LEVER-DISPENSER	MT12,PC,NATURAL	1	SNA
45	DA97-14332A	2	M0042	ASSY TANK WATER	RT53/RT50,DISPENSER	1	SA
46	DA61-04445A	3	-	SPRING ETC-WATER TANK	MT-PJT,SK5	2	SA
47	DA63-07708A	3	-	COVER WATER TANK	RT53/RT50,PE,HB,COOL WH	1	SA
48	DA67-01054C	3	M0357	CAP-WATER TANK	TD09-PJT,PP,COOL WHITE,SC	1	SNA
49	DA67-03806A	3	M0039	TANK WATER	RT53/RT50,PP,NATURAL,DISPENSE	1	SA

Freezing compartment



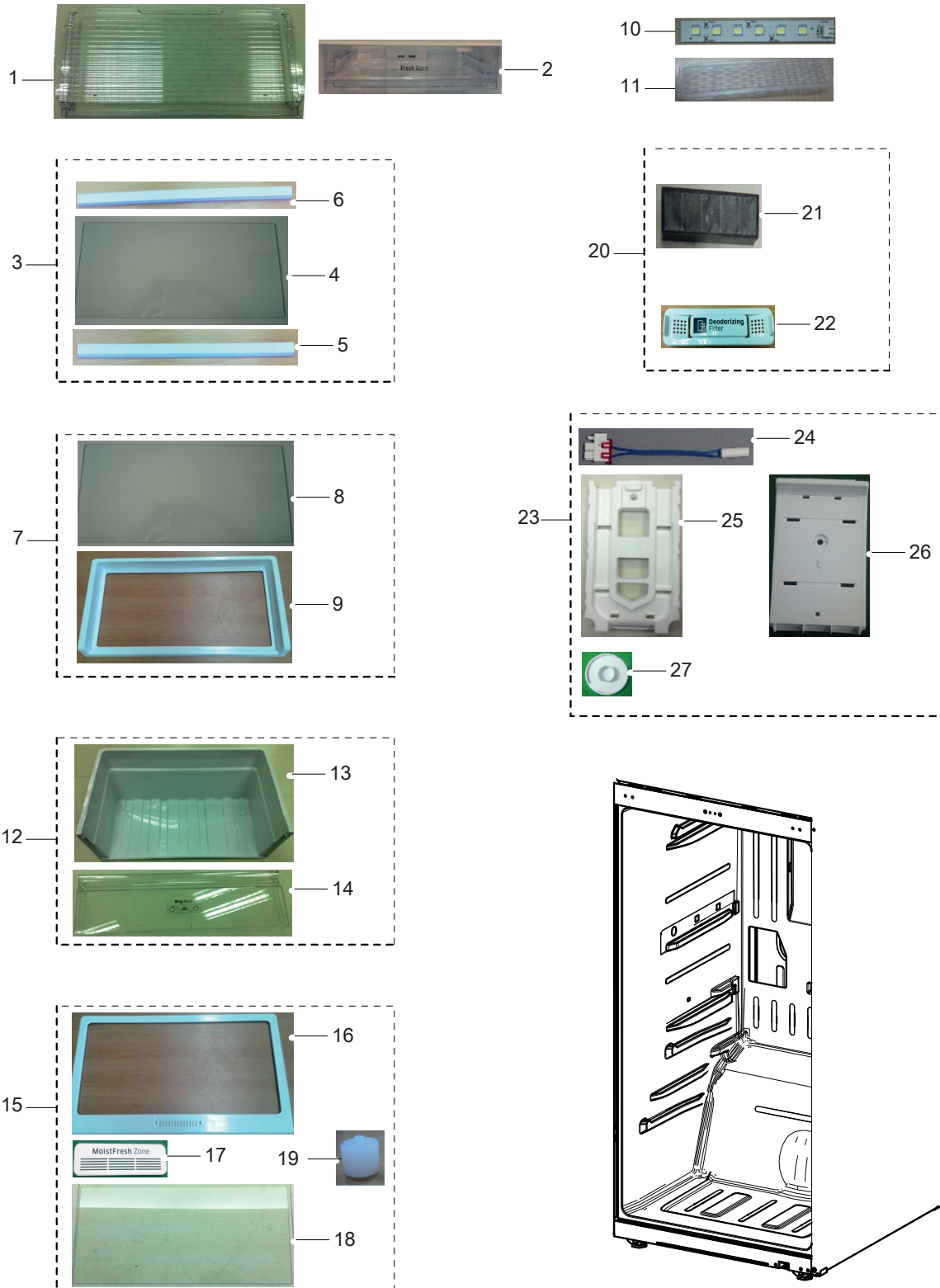
**PART LIST OF FREEZER : RT50H6600SL/EF**

No.	Code No.	Lvl.	Loc.	Description	Specification	Qty	SA/SNA
1	DA90-07941B	2	-	ASSY ICE MAKER-L	3050-2,GPPS BLUE,MANUAL	1	SNA
2	DA61-08910A	3	-	SUPPORT-TRAY ICE L	RT380,HIPS,S834S1,COO	1	SA
3	DA97-13500A	3	A0107	ASSY TRAY-ICE	RT38/35/32/29,COOL,3 TWIST	1	SC
4	DA61-08906A	4	A0718	CASE-TRAY ICE	RT38/35/32/29,3-TWIST,PP,C	1	SA
5	DA61-20136A	4	-	SPRING ETC-ICE MAKER	SR-53EA,STS304,COIL	2	SA
6	DA63-07337A	4	A0120	TRAY ICE	3050,TMF,PP,T1.0,-,COOL WHITE,1	3	SA
7	DA64-04461A	4	A0118	KNOB-TRAY ICE	3050 TMF,ABS,2.0,COOL WHTI	1	SA
8	DA66-01002A	4	M0434	LEVER-TRAY ICE	RT320,POM,NTR,3TWIST	1	SA
9	DA66-01003A	4	-	LEVER-TRAY ICE KNOB	3050,TMF,PA66,NTR	1	SA
10	DA97-13670A	3	-	ASSY TRAY-ICE CUBE	3050,3-TWIST,TP BLUE	1	SA
11	DA63-07333A	4	-	TRAY ICE-CUBE	RT38/35/32/29,3-TWIST,GPPS	1	SA
12	DA41-00519R	2	G0090	ASSY LAMP-LED	3ea,CEM-1,65*10,WHITE,SMAW	1	SA
13	DA63-07355A	2	A0756	COVER-AIR FRE	RT380/350,PP,COOL WHITE	1	SA
14	DA97-14386A	2	M0303	ASSY COVER EVAP-FRE	3050-2,RT53/50/46/43	1	SA
15	DA63-07705A	3	-	COVER EVAP-FRE	3050-2,PP,HB,COOL WHITE,B	1	SNA
16	DA31-00287B	3	-	MOTOR BLDC FAN	ARES2120RA,1870±4%,12V,21	1	SA
17	DA96-01038A	2	A0163	ASSY EVAP-FRE	RT-H530/500,FIN TUBE,230V,	1	SA
18	DA32-00006D	3	A1018	SENSOR TEMP	PX-41C,502AT,DKST1329GW,EXPO	1	SA
19	DA47-00301F	3	A1008	THERMO FUSE-ASSY	AC250V,10A,109~110℃,S.O	1	SA
20	DA47-00460F	3	A0921	HEATER METAL SHEATH	AC230V,3050 TMF, 330	1	SA
21	DA96-01038A	2	A0163	ASSY EVAP-FRE	RT-H530/500,FIN TUBE,230V,	1	SA
22	DA61-00603A	3	T0066	FIXER-SENSOR	n-PJT,PP,-,-,-	1	SA
23	DA61-07410A	3	G0205	FIXER-HEATER FRE	NW2,PP,WHITE,VO	1	SA
24	DA61-07411A	3	A0744	FIXER-FUSE	NW2,PP,NATURAL,BJ730	1	SA
25	DA61-09104B	3	-	PLATE EVAP-REAR	3050,GI-SGCC,-,T0.3	1	SA
26	DA67-30266K	2	A0270	CAP-SCREW	A-TOP,PP,SC-02740R,-,-,Cool-wh	3	SA
27	DA67-03790A	2	-	SHELF-FRE	3050-2,GPPS,TP BLUE,RT53/50	1	SA
28	DA66-10104A	4	-	ROLLER-FRE	POM,-,-,D22,-,-,	2	SC

SAMSUNG ELECTRONICS

11569467

**Fridge compartment**



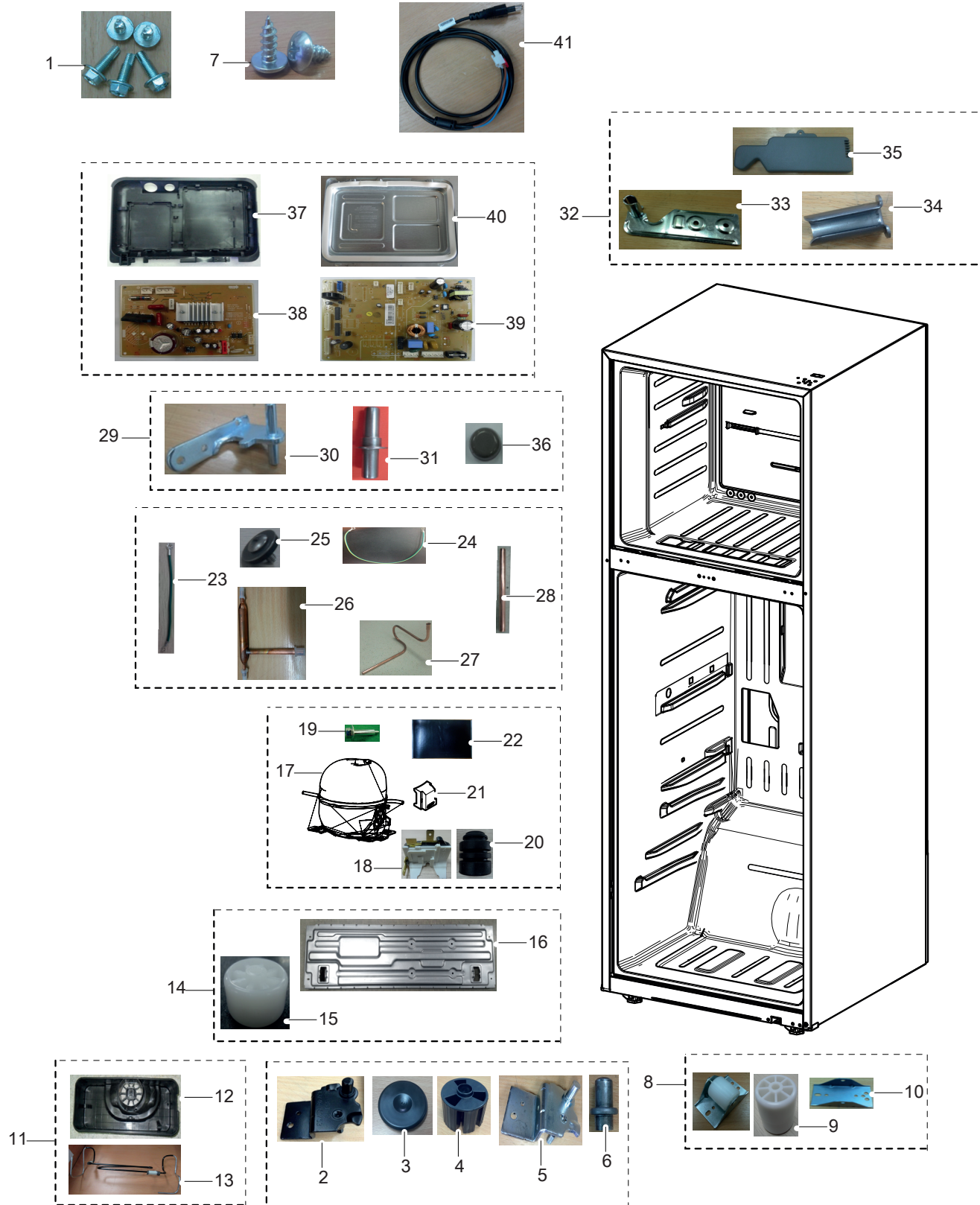
**PART LIST OF FRIDGE : RT50H6600SL/EF**

No.	Code No.	Lvl.	Loc.	Description	Specification	Qty	SA/SNA
1	DA63-07693A	2	-	TRAY CHILLED ROOM	RT53/50,GPPS,TP BLUE,R	1	SA
2	DA63-07691A	2	-	COVER CHILLED ROOM	RT53/50,GPPS,-,TP BLU	1	SA
3	DA97-14355A	2	-	ASSY SHELF REF GLASS	RT 53/50,TRIM SHELF	2	SA
4	DA67-03645W	3	-	GLASS-SHELF REF	GLASS	2	SNA
5	DA64-04280D	3	-	TRIM SHELF-REF FRONT	RT 50/53,HIPS,S834S	2	SNA
6	DA64-04634A	3	-	TRIM SHELF-REF REAR	RT 50/53,HIPS,S834S1	2	SA
7	DA97-14343A	2	-	ASSY SHELF SLIDE	RT53/50	1	SA
8	DA67-03645X	3	-	GLASS-SHELF REF SLIDE	T3.2,GLASS	1	SNA
9	DA67-03798A	3	-	SHELF SLIDE	RT53/50,HIPS,COOL WHITE,RT-H	1	SNA
10	DA41-00519B	2	G0090	ASSY LAMP LED	5ea,CEM-1,100*20,WHITE,SMA	1	SA
11	DA63-07368A	2	A0490	COVER-LAMP	3050,GPPS,T2.0,TRANSFANRENCY	2	SA
12	DA97-14336A	2	M0300	ASSY CASE VEG-LOW	RT53/50	1	SA
13	DA61-09579A	3	-	CASE VEG-LOW	RT53/50,PP,COOL WHITE,-,BJ7	1	SNA
14	DA63-07698A	3	-	COVER VEG-FRONT LOW	RT53/50,GPPS,HB,TP B	1	SNA
15	DA97-14341A	2	A0181	ASSY COVER VEG	RT53/50	1	SA
16	DA63-07700A	3	A0210	COVER VEG	RT53/50,HIPS,-,COOL WHITE,ATEC	1	SNA
17	DA63-07341A	2	-	COVER-SHEET	3050,HIPS,T2.0,HB,COOL WHITE	1	SA
18	DA67-03645Y	3	-	GLASS-SHELF REF LOW	GLASS	1	SNA
19	DA66-00885A	2	A0919	ROLLER-VEG	TD,PP,NTR	2	SA
20	DA97-13606A	2	-	ASSY COVER-DEODORIZER	3050PJT	1	SA
21	DA02-00216B	3	-	CATALYST-DEODORIZER	T10,W15,L30,activate	1	SA
22	DA63-07423A	3	-	COVER-DEODORIZER	3050,PP,-,COOL WHITE,BJ	1	SNA
23	DA97-14387B	2	G0239	ASSY COVER MULTI-REF	3050-2,RT53/50/46/4	1	SA
24	DA32-00006D	3	A1018	SENSOR TEMP	PX-41C,502AT,DKST1329GW,EXPO	1	SA
25	DA62-04343A	3	-	INSULATION-REF	RT53/50/46/43,PS FOAM,WHI	1	SNA
26	DA63-07706B	3	-	COVER MULTI-REF	3050-2,PP,HB,COOL WHITE,	1	SNA
27	DA67-00738A	3	M0356	CAP-KNOB	MAX-PJT,PP,WHITE (SC-93437R),WE	1	SNA

SAMSUNG ELECTRONICS

11569467

**Cabinet compartment**



**PART LIST OF CABINET : RT50H6600SL/EF**

No.	Code No.	Lvl.	Loc.	Description	Specification	Qty	SA/SNA
1	6011-001546	2	A0564	BOLT-HEX	M5(P0.8),L16,ZPC(WHT),SWRCH18A,	3	SA
2	DA97-13857B	2	M0344	ASSY HINGE-LOW	RT6000HW,RT43/46/50/53	1	SA
3	DA61-07973B	3	A0863	FOOT	POLARIS,PP,BLACK,PP_S	1	SA
4	DA61-09106A	3	A0577	FOOT-FRONT	RT6000HW,PP,BLACK,PP_SCRAP	1	SA
5	DA61-09307A	3	A0247	HINGE-LOW	3050,PO-SPHC,T4.0, TRIM-KIT	1	SNA
6	DA66-01052A	4	-	SHAFT HINGE-LOW	3050-2,Trimkit,SWCH10A,N	1	SNA
7	6002-000470	2	G0412	SCREW-TAPPING	TH,+,NO,1,M4,L10,ZPC(WHT),	3	SNA
8	DA97-02361A	3	-	ASSY-CASTER FRONT	TD-PJT,-,-,-	2	SA
9	DA61-07901A	4	M0145	CASTER-FRONT	TD,PP,NTR	2	SA
10	DA61-07925A	4	-	REINF-CASTER	TD,HGI-SGHC,T1.6	2	SNA
11	DA97-12658D	2	A0529	ASSY TRAY DRAIN WATER	3050_TMF,ADD PIPE	1	SA
12	DA63-06816A	3	-	TRAY-DRAIN WATER INV	Trinity2,PP,T2.0,HB	1	SNA
13	DA97-13647B	3	-	ASSY PIPE IMMERSING	3050_TMF,Add seal,RT	1	SA
14	DA97-14356A	2	A0526	ASSY CHASSIS COMP	3050- II (RT-H530G),CASTE	1	SA
15	DA61-40126B	3	A0527	CASTER-REAR	REF-ALL,PP,NATURAL	2	SNA
16	DA64-04656A	3	A0739	CHASSIS COMP	3050- II (RT-H530G),GI-SGCC,-,	1	SNA
17	MSV4A1AL1R/TT1	2	-	COMPRESSOR	115/220V	1	-
18	DA34-00004D	3	A0575	RELAY PROTECTOR O/L	4TM445PHBY-82, 125°C	1	SA
19	6011-001546	2	A0564	BOLT-HEX	M5(P0.8),L16,ZPC(WHT),SWRCH18A,	3	SA
20	DA63-02617A	3	Z1112	GROMMET COMP	USP05,EPDM,OD27.0,BLACK	4	SA
21	DA63-06122A	3	Z1032	COVER RELAY	MSV,MPPO,T2.0,5V-A,BLACK,M-H	1	SA
22	DA62-00960A	2	-	SEAL CUTT-RUBBER	RUBBER,BLACK,T3,W40,L70	1	SA
23	DA39-00429D	2	A0562	ASSY WIRE HARNESS-EARTH	ALL,FREE VOLT,UL	1	SA
24	DA39-00429D	2	A0562	ASSY WIRE HARNESS-EARTH	ALL,FREE VOLT,UL	1	SA
25	DA60-00018A	2	-	SCREW MACHINE	TH,+,PASS,STS304	1	SA
26	DA62-04309C	2	A0669	DRYER	C1220,114,SINGLE MOUTH,Outlet ID2.	1	SA
27	DA62-04366A	2	-	PIPE SUCTION-CONNECT	RT-H530G,CU,-,C1220	1	SA
28	DA73-00199B	2	Z1004	PIPE-PIPE CONNECT	-,C1220T,-,OD6.35,L95,	1	SA
29	DA97-14404A	2	-	ASSY HINGE-MIDDLE	RT-H530G,530/500/460/4	1	SA
30	DA61-09576A	3	-	HINGE-MIDDLE	RT53,50,PO-SPHC,T4.5,ZPC	1	SNA
31	DA66-01106A	3	-	SHAFT-MIDDLE	RT-H530G,SWCH10A,-	1	SNA
32	DA97-13610A	2	A0705	ASSY HINGE UPP	3050PJ,T2.0,380/350	1	SA
33	DA61-08986A	3	A0240	HINGE-UPP	3050PJ,PO-SPHC,T2.0,350/380	1	SNA
34	DA66-00349A	3	A0518	SHAFT-HINGE	USP-PJT,SPC	1	SNA
35	DA63-07711A	2	A0237	COVER HINGE-UP	RT53,50,46,43,PP,HB,BJ750	1	SA
36	DA67-03718A	2	-	CAP SCREW	3050,PP,INOX GRAY	1	SA
37	DA61-08917A	3	-	CASE-PCB PANEL	320,PP,BLACK,-,COPO,3050	1	SNA
38	DA92-00459A	1	-	ASSY PCB INVERTER	INVERTER,3050,148*98.5	1	SA
39	DA92-00601E	1	A0952	ASSY PCB MAIN	DISPLAY,REACTOR,RT6000HW,1	1	SA
40	DA97-13545C	2	-	ASSY COVER PCB-PANEL	320, 350, 380,3050	1	SA
41	3903-000793	2	A0273	CBF-POWER CORD	AT,E.U,EU3F,3C,250V,16A,B	1	SA